

The effect of immediate implant placement on alveolar ridge preservation compared to spontaneous healing after tooth extraction: Radiographic results of a randomized controlled clinical trial

Marco Clementini¹  | Agnese Agostinelli¹ | Walter Castelluzzo¹ | Federica Cugnata² | Fabio Vignoletti¹ | Massimo De Sanctis¹

¹Department of Periodontology, Università Vita-Salute San Raffaele, Milan, Italy

²University Centre of Statistics for Biomedical Sciences (CUSBS), Università Vita-Salute San Raffaele, Milan, Italy

Correspondence

Marco Clementini, Department of Periodontology, Università Vita-Salute San Raffaele, Via Olgettina 48, Milano, Italy.
Email: mclementini@me.com

Funding information

The project (14-034) was supported by a grant from the Osteology Foundation, Switzerland.

Abstract

Aim: To radiographically evaluate the effect of immediate implant placement plus alveolar ridge preservation (ARP) with a deproteinized bovine bone mineral and a collagen matrix (IMPL/DBBM/CM) as compared to ARP (DBBM/CM) or spontaneous healing (SH) on vertical and horizontal bone dimensional changes after 4 months of healing.

Materials and methods: Thirty patients requiring extraction of one single-rooted tooth or premolar were randomly assigned to IMPL/DBBM/CM, ARP DBBM/CM or SH. Cone-beam computed tomography (CBCT) scans, performed before tooth extraction and after 4 months, were superimposed in order to assess changes in ridge height at the buccal and lingual aspect and in ridge width at 1 mm, 3 mm and 5 mm apical to the bone crest. Kruskal-Wallis test was applied for comparison of differences between groups.

Results: No statistically significant differences between the groups were observed for the vertical bone resorption of the buccal and the lingual side, while significant differences were found between SH group (-3.37 ± 1.55 mm; $-43.2 \pm 25.1\%$) and both DBBM/CM (-1.56 ± 0.76 mm; $-19.2 \pm 9.1\%$) and IMPL/DBBM/CM (-1.29 ± 0.38 mm; $-14.9 \pm 4.9\%$) groups in the horizontal dimension at the most coronal aspect.

Conclusion: Ridge preservation techniques using DBBM and CM reduce the horizontal bone morphological changes that occur, mostly in the coronal portion of the buccal bone plate following tooth extraction, when compared to spontaneous healing. This is true regardless of whether immediate implant placement is performed or not.

KEYWORDS

alveolar ridge preservation, CBCT, immediate implant placement, radiographic changes, tooth extraction

1 | INTRODUCTION

It is well known that following the extraction of a tooth, severe hard and soft tissue alterations may take place at the socket site (Pietrokovski & Massler, 1967; Schropp, Wenzel, Kostopoulos, & Karring, 2003), resulting in a subsequent reduction of both vertical and horizontal ridge dimensions (Araujo & Lindhe, 2005; Discepoli et al., 2013; Tan, Wong, Wong, & Lang, 2012; Van der Weijden, Dell'Acqua, & Slot, 2009). In many occasions, these bone dimensional changes do not allow either appropriate pontic fabrication or correct placement of endosseous implants.

Over the past 20 years, several surgical procedures, grouped under the term of "alveolar ridge preservation" (ARP), have been introduced, aiming to maintain the existing soft and hard tissues as well as a stable ridge volume, to simplify subsequent treatment procedures and optimize functional and aesthetic outcomes (Hämmerle, Araújo, & Simion, 2012). A recent controlled clinical study (Jung et al., 2013) with a 6-month follow-up evaluated different techniques for ARP. The authors concluded that the application of a deproteinized bovine bone mineral (DBBM) with 10% collagen into an extraction socket, covered either with a collagen matrix (CM) or an autogenous soft tissue graft, resulted in less vertical and horizontal changes compared with spontaneous healing or the use of b-tricalcium phosphate particles alone without primary closure. Moreover, a conspicuous number of systematic reviews on this topic have confirmed the efficacy of ARP in preventing postextraction dimensional changes of the alveolar ridge (Avila-Ortiz, Chambrone, & Vignoletti, 2019; Ten Heggler, Slot, & Weijden, 2011; Horvath, Mardas, Mezzomo, Needleman, & Donos, 2013; MacBeth, Trullenque-Eriksson, Donos, & Mardas, 2017; Mardas, Chadha, & Donos, 2010; Vignoletti, Discepoli, et al., 2012; Vignoletti, Matesanz, et al., 2012; Vittorini Orgeas, Clementini, Risi, & Sanctis, 2013). However, when ARP techniques are performed before implant placement, this treatment modality requires a minimum of 3–6 months before implant insertion (Avila-Ortiz et al., 2019; De Risi, Clementini, Vittorini, Mannocci, & Sanctis, 2015), prolonging treatment time and needing a second surgical procedure for implant insertion.

Immediate implant placement (IIP) in fresh extraction sockets was introduced, in order to reduce the number of surgical procedures and potentially limit physiological bone resorption (Lazzara, 1989; Schulte & Heimke, 1976). However, IIP may not always provide successful clinical outcomes (Lang, Pun, Lau, Li, & Wong, 2012; Tonetti et al., 2017) and has been documented that this surgical protocol fails to prevent the horizontal and vertical ridge alterations (Araujo, Sukekava, Wennstrom, & Lindhe, 2005; Discepoli et al., 2015; Vignoletti, Discepoli, et al., 2012; Vignoletti, Matesanz, et al., 2012; Vignoletti & Sanz, 2014). This may result in impaired aesthetics (Evans & Chen, 2008; Tonetti et al., 2017) such as marginal soft tissues recessions, especially if treating the buccal side of maxillary sites in patients with a high smile line (Cosyn, Hooghe, & Bruyn, 2012).

In order to improve the aesthetic outcomes and reduce the bone dimensional changes, several techniques have been proposed, such as flapless protocols, immediate provisionalization, connective

Clinical Relevance

Scientific rationale for the study: No human study has ever compared simultaneous implant placement + ARP to ARP alone and to spontaneous healing. Hence, the question that remains unanswered is whether simultaneous implant placement + ARP may influence bone modelling and remodelling as compared to ARP or to spontaneous healing.

Principal findings: In the horizontal dimension at the most coronal aspect, minor dimensional changes were observed in DBBM/CM and IMPL/DBBM/CM groups, whereas a pronounced (40%) resorption was observed in the SH group.

Practical implications: Immediate implant placement in postextraction sites plus an ARP technique may be a viable option, to reduce hard tissue morphological changes and treatment time.

tissue grafting, GBR techniques or filling of the gap with a bone replacement graft (Chen & Buser, 2014). Although no consensus exists on the efficacy of regenerative techniques at the time of immediate implant placement (Clementini et al., 2015), results from a very recent clinical trial demonstrated that placing a bone replacement graft in the marginal gap between the implant and the buccal bone plate significantly reduced (approximately 0.5 mm) the horizontal dimensional changes of the buccal bone after IIP in fresh extraction sockets (Sanz, Lindhe, Alcaraz, Sanz-Sanchez, & Cecchinato, 2017). Whether this reduction is similar to the one provided by ARP is still unknown, since up-to-date no human study has ever compared immediate implant placement + ARP to ARP alone and to spontaneous healing. Hence, the question that remains is whether IIP + ARP renders different results in terms of radiographic bone changes as compared to ARP and spontaneous healing.

Thus, the aim of this randomized controlled clinical trial was to evaluate the effect of immediate implant placement + ARP (test treatment) as compared to ARP (control treatment) or spontaneous healing (negative control) on bone dimensional changes after 4 months of healing postextraction. The primary objective was to radiographically evaluate the horizontal dimensional changes in millimetre, whereas the secondary objective was to evaluate the horizontal dimensional changes in percentage and the vertical dimensional changes in millimetre and percentage.

2 | MATERIALS AND METHODS

2.1 | Study design

This study was a prospective controlled, randomized, clinical investigation according to the CONSORT statement (<http://www.consort-statement.org/>). All procedures and materials were approved by the local ethical committee (REF: 14-034, 24/07/2015) and monitored

following the Good Clinical Practice. The trial was registered at <http://www.clinicaltrials.gov/> (REF: NCT03422458).

2.2 | Sample size

To calculate the number of patients to be treated, summary statistics (mean and standard deviation) reported by Jung et al. (2013) were used for the variable HW-1C, respectively, for the spontaneous healing group (-3.3 ± 2) and DBBM-C/CM group (-1.2 ± 0.8). The effect size was equal to 1.4, and this value was used to determine the sample size based on a two-independent sample Mann-Whitney test (two-tailed) with a significance level alpha set equal to 5% and power equal to 80%. GPower software, v. 3.1, was used. This resulted in 10 subjects for each group.

2.3 | Population

Participants were selected on a consecutive basis among patients of the Dental Clinic at University Vita Salute San Raffaele, Milan, Italy, between January 2016 and January 2018. Patients agreed to participate in the study by signing a written informed consent, in full accordance with the ethical principal of Declaration of Helsinki on experimentation involving human subjects, as revised in 2008.

2.4 | Inclusion criteria

- Adult patients (>18 years old) requiring extraction (for caries, fracture, prosthetic reasons) of one upper or lower single rooted tooth (incisor, canine) or premolar.
- Presence of adjacent (mesial and/or distal) natural teeth.
- The presence of an intact extraction socket (evaluated after a flapped tooth extraction), with a coronal margin of the buccal bone crest that deviated ≤ 1 mm from the coronal margin of the lingual bone crest and ≤ 3 mm from the mesial and/or distal inter proximal bone crest (evaluated on the preoperative CBCT).
- Systemically healthy patients not smoking more than 10 cigarettes/day.
- Patients with adequate oral hygiene (FMPS < 25%) and periodontal health (FMBS < 10% and absence of PPD > 4 mm with BoP) (Lang & Bartold, 2018).

2.5 | Exclusion criteria

- Uncontrolled diabetes (HbA1c > 7), osteoporosis or any other systemic or local disease or condition that would compromise post-operative healing.
- Patients with a history of malignancy, radiotherapy or chemotherapy for treatment of malignancy.
- Pregnant patient or intending to become pregnant or nursing at the time of study inclusion.
- Patients taking medications or having treatments with an effect on healing in general (e.g., steroids, large doses of anti-inflammatory drugs, bisphosphonates).

2.6 | Randomization process and allocation concealment

Randomization was performed using a computer-generated list by someone not involved in other aspects of the study. Allocation concealment was performed by opaque continuously numbered sealed envelopes that were opened after tooth extraction and assessment of the integrity of the bone plates.

2.7 | Treatment procedures

A full-thickness envelope flap including the mesial and distal tooth was performed, and the tooth was extracted with great care to preserve the buccal bone plate and the surrounding hard tissue. Granulation tissue was carefully removed with hand instruments, and sterile saline rinses were performed. After assessment of the integrity of the bone plates, patients were randomly assigned to (Figure 1):

- Test group (IMPL/DBBM/CM): immediate implant placement, plus a collagenated bovine bone mineral grafted into the gap up to the buccal bone crest, sealed with a collagen porcine matrix.
- Control group (DBBM/CM): collagenated bovine bone mineral grafted into the socket up to the buccal bone crest, sealed with a collagen porcine matrix.
- Negative control group (SH): spontaneous healing.

In detail, in the test group, an immediate implant (TTi WINSIX®, Biosafin, Ancona, Italy) was placed in the correct prosthetically driven position, positioning the interface between the rough and smooth surface of the implant 1 mm apical respect to the buccal bone crest. The drilling of the osteotomies was performed following the standard surgical procedure as suggested by the implant manufacturer. After securing the closure cap, a bone substitute material (Geistlich Bio-Oss Collagen; Geistlich Pharma AG, 6110 Wolhusen, Switzerland) was placed in the gap that was formed between the implant surface and the hard tissue walls of the extraction socket. The graft was applied to fill the defect until the level of a line connecting the buccal and palatal/lingual bone crest. Subsequently, after flap replacement, the soft tissue borders were de-epithelialized and a collagen porcine matrix (Geistlich Mucograft Seal; Geistlich Pharma AG) was adapted to seal the graft and the implant using single interrupted resorbable sutures (Polysorb; Covidien, Segrate, Italy).

In the control group, a bone substitute material (Geistlich Bio-Oss Collagen; Geistlich Pharma AG) was placed in the extraction socket to the level of a line connecting the buccal and palatal/lingual bone crest. Subsequently, after flap replacement, the soft tissue borders were de-epithelialized and a collagen matrix (Geistlich Mucograft Seal; Geistlich Pharma AG) was adapted to seal the graft using single interrupted resorbable sutures (Polysorb; Covidien).

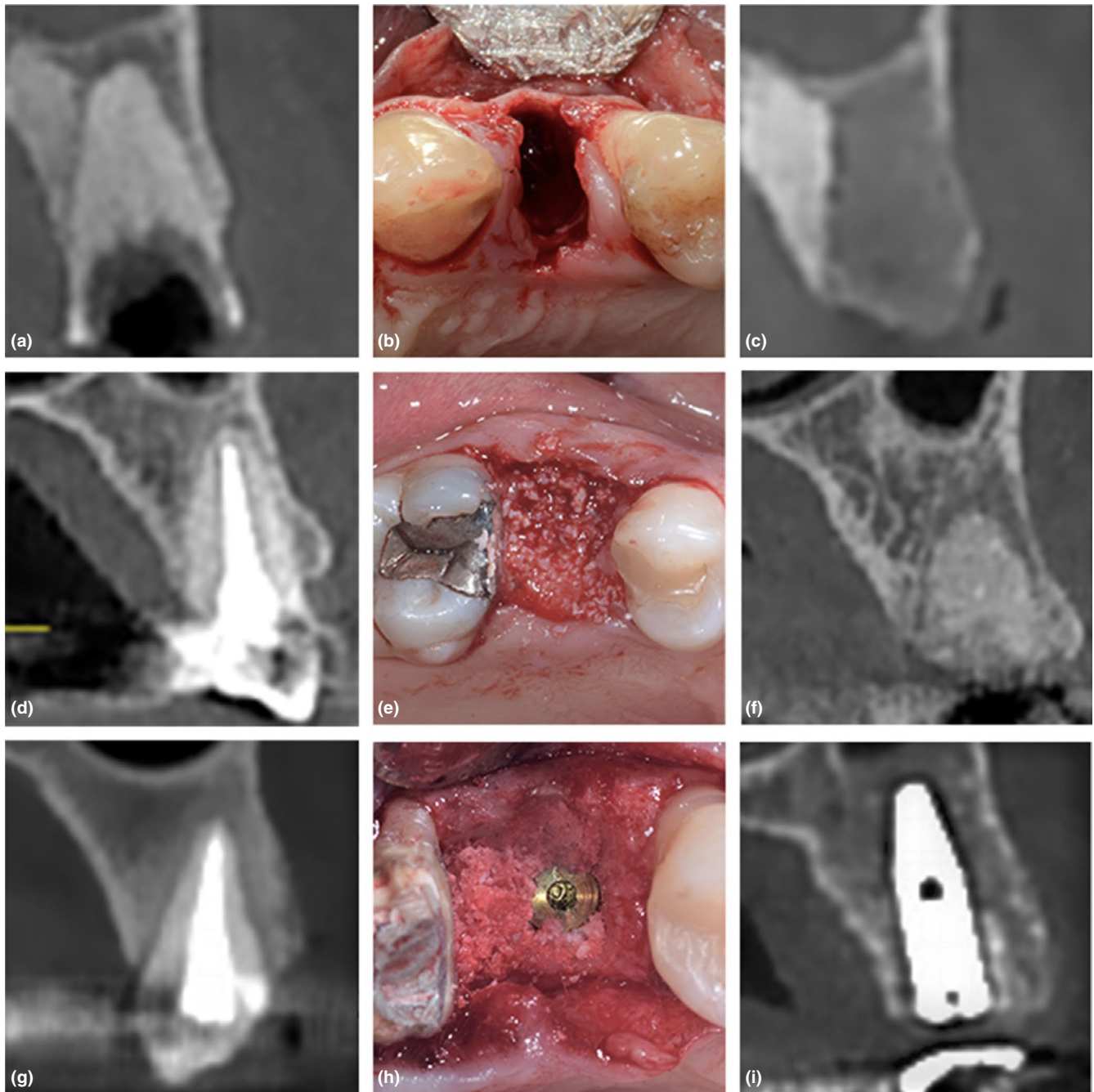


FIGURE 1 Baseline cone-beam computed tomography (CBCT), intra-operative view and 4 months postsurgery CBCT representative of the three treatment modalities. (1) spontaneous healing: (a) baseline, (b) intra-operative, (c) 4 months. (2) DBBM-CM site: (d) baseline, (e) intra-operative, (f) 4 months. (3) IMPL/DBBM-CM site: (g) baseline, (h) intra-operative, (i) 4 months

In SH group, flap was repositioned with interrupted resorbable sutures (Polysorb; Covidien) and the coagulum within the socket was left for spontaneous healing.

Patients were instructed to rinse twice a day (starting the day after surgery) with 0.2% chlorhexidine and received antibiotics (Augmentin 1g) twice a day for 6 days and analgesic medication (Ibuprofen 600 mg) if needed. All patients were recalled at 7 days for suture removal. Patients then followed their individual maintenance programme according to the individual periodontal and caries risk assessment. Four months postextraction, all patients were recalled for a follow-up.

2.8 | Clinical measurements

Full-mouth plaque score (FMPS) (O'Leary, Drake, & Naylor, 1972), full-mouth bleeding score (FMBS) (Muhlemann & Son, 1971) and keratinized tissue height (KTH), measured from the most coronal extension of gingival margin to the mucogingival line, were recorded with a periodontal probe (PCP UNC 15, Hu-Friedy) at baseline and 4 months. Moreover, gingival thickness (GT) was assessed at baseline and 4 months, as described in Clementini, Discepoli, Danesi, & Sanctis, 2018. All clinical measurements were made by a single blinded calibrated examiner (A.A.).

2.9 | Radiographic measurements

Before treatment procedures, a cone-beam computed tomography (CBCT) scan was performed using a 3D examination (NewTom VGi evo, QRS.r.l., Verona), following the producer's prescriptions: resolution of 0.2 mm, scan time: 15 s and exposure time: 1.8 s. After four months postextraction, all selected patients underwent to a second CBCT scan with the same settings as described above.

To calculate CBCT measurements, a method similar to the one proposed by Jung et al. (2013) was adopted. Firstly, in the baseline data set, the distance from the mesial and/or distal bone crest was calculated in the axial section, and subsequently, the cross section was selected passing through the pulp canal of the involved tooth. The CBCT performed after 4 months was analysed using the same procedure, considering the distance from the mesial and/or distal bone crest previously calculated. Then, a computer-assisted (GeoGebra GmbH, Wolfauer Str 90, 4040 Linz, Austria) superimposition of the original Digital Imaging and Communications in Medicine (DICOM) data of the two CBCT scans was done in areas where no changes had taken place during the 4 months (e.g., the cranial base in the maxilla or the lower border and angle in the mandible, respectively). Varying the degree of transparency of the sections, DICOM data of the two CBCT scans were manually checked in order to assure a perfect match. Finally, the measurements were computed on the selected scans at baseline and at 4 months, by means of the following reference points and lines defined and drawn in the baseline image (Figure 2):

- Four reference points: the point representing the radiographic apex of the tooth (apical central point, ACP) and the point representing the cusp of the tooth (coronal central point, CCP). In cases where the crown of the tooth was missing or in cases of bicuspid, a segment was traced using 2 points (the most coronal and buccal point and the most coronal and lingual point of the tooth) and the

centre of this segment was taken as the coronal reference point; two points representing respectively the most coronal buccal (coronal buccal point, CBP) and the most coronal lingual (coronal lingual point, CLP) portion of the buccal and lingual bone plates.

- Eleven reference lines, subsequently drawn, as follows: a vertical central line (VCL), in the centre of the socket, which crosses the apical (ACP) and coronal (CCP) central reference points; a vertical buccal line (VBL) and a vertical lingual line (VLL), parallel to the VCL and crossing respectively the most coronal point of the buccal (CBP) and lingual (CLP) bone crest; the buccal bone crest line (BCL_B) and the lingual bone crest line (BCL_L) connecting respectively the most coronal point of the buccal (CBP) and lingual (CLP) bone crest and perpendicular to VCL; the horizontal lines, perpendicular to the VCL drawn in precedence at 1, 3 and 5 mm and parallel to the straight lines passing through CBP (BCL_B) and CLP (BCL_L).

Hence, the following measurements were performed in millimetre:

- Thickness of the buccal and lingual bone plate at three levels (1, 3 and 5 mm), only at baseline.
- Vertical ridge height, measured at the buccal and lingual site, at baseline and 4 months.
- Mid-buccal and mid-lingual horizontal ridge width, measured at 1, 3 and 5 mm below respectively the CBP and CLP, at baseline and 4 months.

In addition, the following dimensional changes over time, based on the measurements performed at baseline and at 4 months, were assessed and expressed both in percentages and in millimetre:

- changes in ridge height at the buccal and lingual aspect;
- changes in ridge width at three levels (1, 3, 5 mm) respectively of

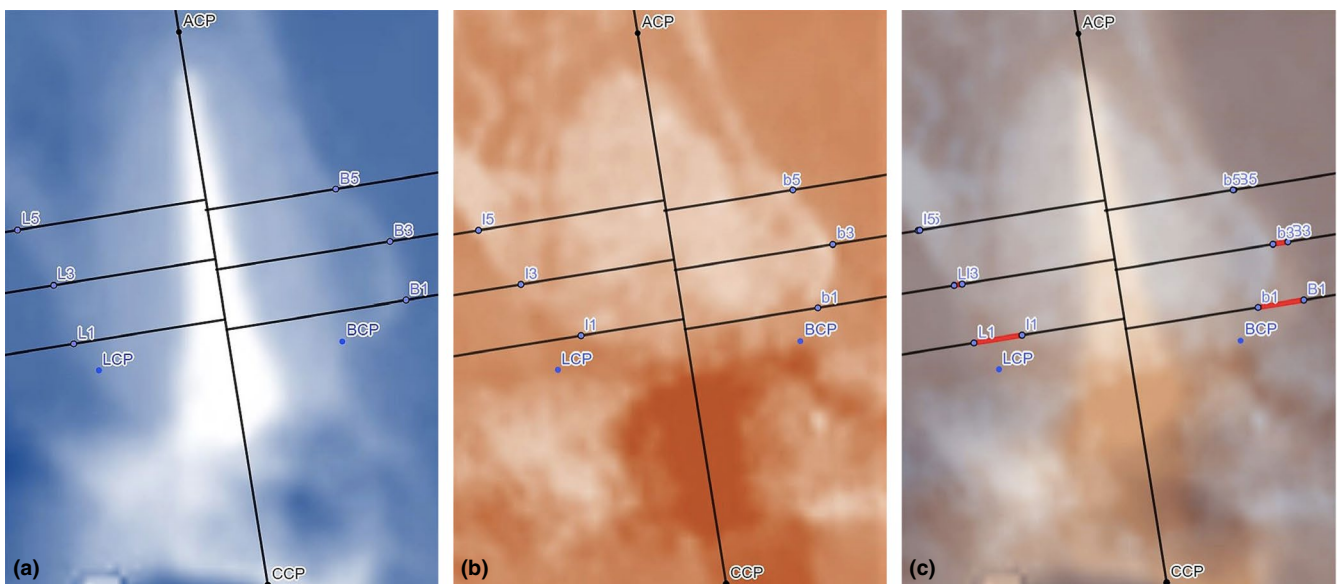


FIGURE 2 Bone changes measurements. ACP: apical central point. CCP: coronal central point. BCP: buccal coronal point. LCP: lingual central point

the whole ridge, from the middle of the ridge to the buccal bone crest and from the middle of the ridge to the lingual bone crest.

All superimpositions of CBCT images and measurements of morphological changes were made by a single calibrated examiner (W.C.), who superimposed and measured, 24 hr apart, baseline and 4 months CBCT images of three different cases not included in the study. Intra-class coefficient correlation (Bliese, 2000) was 0.9891839.

2.10 | Data analysis

Descriptive statistics were provided for all the measures collected in the study. To test whether treatment groups were different, Kruskal–Wallis test, that is, the nonparametric counterpart to standard ANOVA, followed by post hoc analysis (Dunn's pairwise test and Bonferroni's adjustment of p-values), has been applied for comparison of differences between groups.

All the analyses were performed using R statistical software (R Development Core Team, 2016). In all the analyses, the significance threshold was set at 0.05.

3 | RESULTS

The study population consisted of 32 subjects that were screened for participating in this clinical trial from 2015 to 2018. Of these patients, two were excluded due to a loss of buccal bone plate after tooth extraction. A total of 30 subjects were finally recruited, randomized and included in the clinical trial: 10 allocated to the SH

group (negative control), 10 allocated to DBBM-CM group (control), and 10 allocated to IMPL/DBBM-CM group (test), respectively. Hence, a total of 30 subjects were included in the analysis (Figure 3).

No significant differences between treatment groups were found at the baseline (Table 1) regarding age, gender, smoking status, tooth position, presence of both mesial and distal tooth, reason for extraction, FMPS, FMBS, KTH, GT and thickness of the crest.

3.1 | Clinical outcomes

All treated sites healed uneventfully, and no postoperative complications were recorded. No significant differences were assessed from baseline to 4-month follow up for FMPS, FMBS, KTH and GT in the three study groups. Slight but not significant differences were observed for KTH (−0.4 mm) and GT (+0.35 mm) for SH group, while no differences were observed for DBBM/CM group and IMPL/DBBM/CM group.

3.2 | Radiographic outcomes

Dimensional alterations in millimetre and percentage that occurred during healing for all sites are reported in Table 2.

3.2.1 | Horizontal dimensional changes

One millimetre apical to the most coronal bone crest, the ridge width decreased 3.37 ± 1.55 mm ($43.2 \pm 25.1\%$), 1.56 ± 0.76 mm ($19.2 \pm 9.1\%$) and 1.29 ± 0.38 mm ($14.9 \pm 4.9\%$) in the SH, DBBM/CM and IMPL/DBBM/CM groups, respectively (Figure 4). No statistically

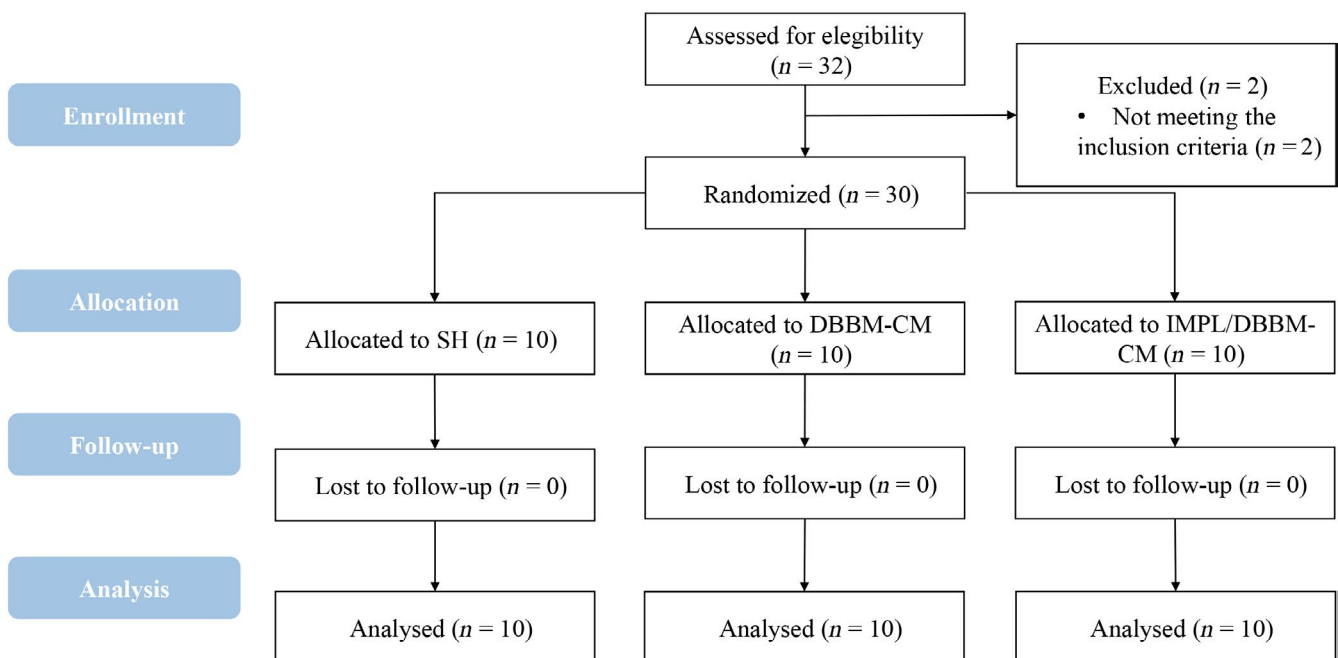


FIGURE 3 Consort diagram showing the study design.

Baseline characteristics	SH	DBBM-CM	IMPL/DBBM-CM
Age (years)	50.5 (12.2)	55.5 (11.6)	52.5 (7.5)
Male/female	7/3	4/6	3/7
Smokers	3	4	3
Maxilla/mandible	8/2	6/4	8/2
Anterior/premolars	5/5	5/5	6/4
Presence of both mesial/distal tooth	9	9	9
Reason for extraction (endo/fracture/prosthetic/root resorption)	5/1/4	5/2/2/1	4/3/2/1
FMPS (%)	15.3 (1.3)	15.1 (1.9)	14.9 (1.5)
FMBS (%)	8.9 (0.4)	8.3 (0.6)	8.6 (0.5)
KTH (mm)	2.70 (1.25)	3.70 (0.95)	4.00 (1.41)
GT (mm)	1.40 (0.57)	1.30 (0.59)	1.30 (0.42)
Thickness 1 mm buccal (mm)	1.17 (0.39)	1.33 (0.25)	1.34 (0.45)
Thickness 3 mm buccal (mm)	1.21 (0.55)	1.35 (0.48)	1.37 (0.94)
Thickness 5 mm buccal (mm)	1.59 (0.41)	1.71 (1.30)	1.64 (0.90)
Thickness 1 mm lingual (mm)	1.99 (1.054)	2.43 (1.64)	2.05 (1.30)
Thickness 3 mm lingual (mm)	2.38 (0.91)	2.89 (1.78)	3.08 (1.81)
Thickness 5 mm lingual (mm)	3.02 (1.58)	4.12 (2.16)	4.34 (2.32)

TABLE 1 Baseline demographic, clinical and radiographic data of included patients

significant differences were observed between test and control groups, while significant differences were observed between SH group and both DBBM/CM and IMPL/DBBM/CM group.

No statistically significant differences between groups were observed for the ridge width changes 3 mm and 5 mm apical to the most coronal bone crest.

Mid-buccal ridge width 1 mm apical to the most coronal bone crest decreased 2.45 ± 1.29 mm ($54.9 \pm 20.9\%$), 0.91 ± 0.43 mm ($25.9 \pm 11\%$) and 0.99 ± 0.21 mm ($26 \pm 7\%$) in the SH, DBBM/CM and IMPL/DBBM/CM groups, respectively. No statistically significant differences were observed between test and control groups, while significant differences were observed between SH group and both DBBM/CM and IMPL/DBBM/CM group. Mid-lingual ridge width 1 mm apical to the most coronal bone crest decreased 0.98 ± 0.93 mm ($24.3 \pm 22\%$), 0.64 ± 0.4 mm ($14.4 \pm 9\%$) and 0.29 ± 0.29 mm ($5 \pm 9\%$) in the SH, DBBM/CM and IMPL/DBBM/CM groups, respectively. No statistically significant differences were observed between groups, except changes in percentages between SH group and IMPL/DBBM/CM group.

Mid-buccal ridge width 3 mm apical to the most coronal bone crest decreased 1.92 ± 1.99 mm ($41.5 \pm 26.4\%$) 0.53 ± 0.44 mm ($15.7 \pm 13.8\%$) and 0.70 ± 0.33 mm ($19.2 \pm 9.4\%$) in the SH, DBBM/CM and IMPL/DBBM/CM groups, respectively. No statistically significant differences were observed between test and control groups, while significant differences were observed between SH group and both DBBM/CM and IMPL/DBBM/CM group. No statistically differences between groups were observed for the mid-lingual ridge width changes 3 mm apical to the most coronal bone crest.

No statistically significant differences between groups were observed 5 mm apical to the most coronal bone crest for mid-buccal and mid-lingual ridge width changes.

3.2.2 | Vertical changes

No statistically significant differences between the groups were observed at the buccal and the lingual bone crest (Figure 5).

4 | DISCUSSION

The present study investigated the effect of immediate implant placement on alveolar ridge preservation when compared to alveolar ridge preservation alone or spontaneous healing of the socket. Radiographic linear measurements using DICOM data demonstrated the effectiveness of the alveolar ridge preservation technique, independently of the insertion of the implant, since these surgical protocols reduced the hard tissue dimensional changes that occurred after spontaneous healing of a flapped tooth extraction.

4.1 | Spontaneous healing

In this study, a marked resorption of the alveolar ridge was observed at 4 months when the socket was left to heal spontaneously after a flapped procedure, revealing a horizontal ridge width change of 3.37 ± 1.55 mm ($43.2 \pm 25.1\%$) and a vertical change of 0.8 ± 1.1 mm ($12 \pm 17\%$) at the buccal aspect. These data are in agreement with those of a very recent similar radiographic study by Jung et al. (2013), in which a flapless procedure was performed.

The scientific literature has amply demonstrated in humans that after the extraction of a tooth, significant changes occur in ridge dimension both horizontally and vertically (Pietrokovski & Massler,

TABLE 2 Calculated statistical differences for changes in ridge height and width over 4 months among the three treatment modalities

Dimensional changes	SH	DBBM-CM	IMPL/ DBBM-CM	Kruskal- Wallis (p-value)	Pairwise comparisons		
					SH vs. DBBM-CM	SH vs. IMPL/ DBBM-CM	DBBM-CM vs. IMPL/ DBBM-CM
Vertical buccal (mm)	-0.83 (1.14)	-0.31 (0.33)	-0.56 (0.38)	0.3444			
Vertical lingual (mm)	-0.21 (0.31)	-0.32 (0.47)	-0.50 (0.58)	0.4658			
Vertical buccal (%)	-10.60 (14.00)	-3.94 (4.79)	-6.26 (4.64)	0.4181			
Vertical lingual (%)	-2.15 (3.23)	-3.58 (4.72)	-4.98 (5.83)	0.4586			
Horizontal 1 mm (mm)	-3.37 (1.55)	-1.56 (0.71)	-1.29 (0.38)	0.0008	0.0133	0.0011	1
Horizontal 3 mm (mm)	-2.41 (1.97)	-1.07 (0.69)	-0.99 (0.48)	0.0534			
Horizontal 5 mm (mm)	-1.88 (1.55)	-0.96 (0.61)	-0.92 (0.59)	0.1858			
Horizontal 1 mm (%)	-43.23 (25.05)	-19.21 (9.18)	-14.92 (4.85)	0.001	0.0213	0.0011	1
Horizontal 3 mm (%)	-30.62 (28.60)	-12.27 (8.56)	-10.78 (5.64)	0.0738			
Horizontal 5 mm (%)	-23.12 (20.69)	-10.44 (7.13)	-9.51 (6.44)	0.1349			
Mid-buccal 1 mm (mm)	-2.45 (1.29)	-0.91 (0.43)	-0.99 (0.21)	0.0001	0.0003	0.0014	1
Mid-buccal 3 mm (mm)	-1.92 (1.99)	-0.53 (0.44)	-0.70 (0.33)	0.0292	0.0342	0.1461	1
Mid-buccal 5 mm (mm)	-1.43 (1.35)	-0.56 (0.44)	-0.53 (0.31)	0.0833			
Mid-buccal 1 mm (%)	-54.96 (20.99)	-25.96 (11.01)	-26.80 (7.07)	0.0004	0.0009	0.0034	1
Mid-buccal 3 mm (%)	-41.51 (26.45)	-15.76 (13.86)	-19.22 (9.44)	0.0335	0.056	0.095	1
Mid-buccal 5 mm (%)	-38.771 (28.16)	-16.90 (15.21)	-14.87 (8.78)	0.047	0.1262	0.076	1
Mid-lingual 1 mm (mm)	-0.98 (0.93)	-0.64 (0.40)	-0.29 (0.29)	0.0825			
Mid-lingual 3 mm (mm)	-0.55 (0.59)	-0.53 (0.29)	-0.29 (0.26)	0.1061			
Mid-lingual 5 mm (mm)	-0.45 (0.45)	-0.40 (0.25)	-0.38 (0.39)	0.9741			
Mid-lingual 1 mm (%)	-24.03 (22.07)	-14.47 (9.65)	-5.99 (6.18)	0.0308	1	0.031	0.2061
Mid-lingual 3 mm (%)	-14.30 (15.87)	-10.29 (6.51)	-5.20 (4.74)	0.1163			
Mid-lingual 5 mm (%)	-10.88 (12.61)	-7.00 (4.60)	-6.44 (7.08)	0.7421			

In bold: statistically significant differences

1967; Schropp et al., 2003). A very recent systematic review demonstrated a horizontal dimensional reduction of 3.79 ± 0.23 mm (29%–63%) and a vertical bone loss at the buccal aspect of 1.24 ± 0.11 mm (11%–22%) at 6 months (Tan et al., 2012).

In this study, further analysis of mid-buccal and mid-lingual bone crest revealed that vertical and horizontal bone dimensional changes were more pronounced at the buccal (vertical: 0.8 ± 1.1 mm; horizontal: 2.45 ± 1.29 mm) than at the lingual (vertical: 0.2 ± 0.3 mm; horizontal: 0.98 ± 0.93 mm) aspect, thus shifting the centre of the crest towards a more palatal position. This observation is in agreement with preclinical studies by Araújo and Lindhe (2005), Fickl et al. (2008) and Discepoli et al. (2013) in which the observed morphological changes were more significant at the buccal than the palatal/lingual aspects.

On the other hand, similar to results from clinical trials in which radiographic analysis was performed at different levels below the alveolar crest (Jung et al., 2013; Kerr et al., 2008), this study demonstrated less horizontal ridge reduction as the distance from the alveolar crest increased, despite differences in the surgical method (flapped in this study, flapless in Jung et al., 2013, and Kerr et al., 2008). Different changes between the two cortices (buccal and

palatal/lingual aspects) and at different heights (1, 3 and 5 mm) below the crest may be explained by differences in thickness of the alveolar crest at baseline. This resorption pattern may be due to the presence of bundle bone, in which the periodontal ligament fibres of a tooth invest, and which is lost following tooth extraction as it is a tooth-dependent structure. In preclinical studies from Araújo and Lindhe (2005) and Discepoli et al. (2013), it was observed that thin crestal regions (high resorption rate) were made up exclusively of bundle bone while the thick regions (low resorption rate) were comprised of a combination of bundle bone and lamellar bone.

Relatively large thickness of the marginal crest at baseline (buccal: 1.17 ± 0.39 mm; lingual: 1.99 ± 1.05 mm) and site selection (mostly premolars) may explain the discrepancy with respect to the amount of crestal resorption between this study and results from Araújo, da Silva, de Mendonça, & Lindhe (2015), in which a vertical change of 3.6 mm (35.8%) at the buccal site and 1.4 mm (13.4%) at the palatal site were reported. In that article, the study sample comprised mostly anterior teeth, and further analysis of their data revealed that the reduction in the buccal bone plate was more pronounced in the anterior than in the premolar regions. As demonstrated by Januario et al. (2011) from a radiographic study, about 50% of the coronal

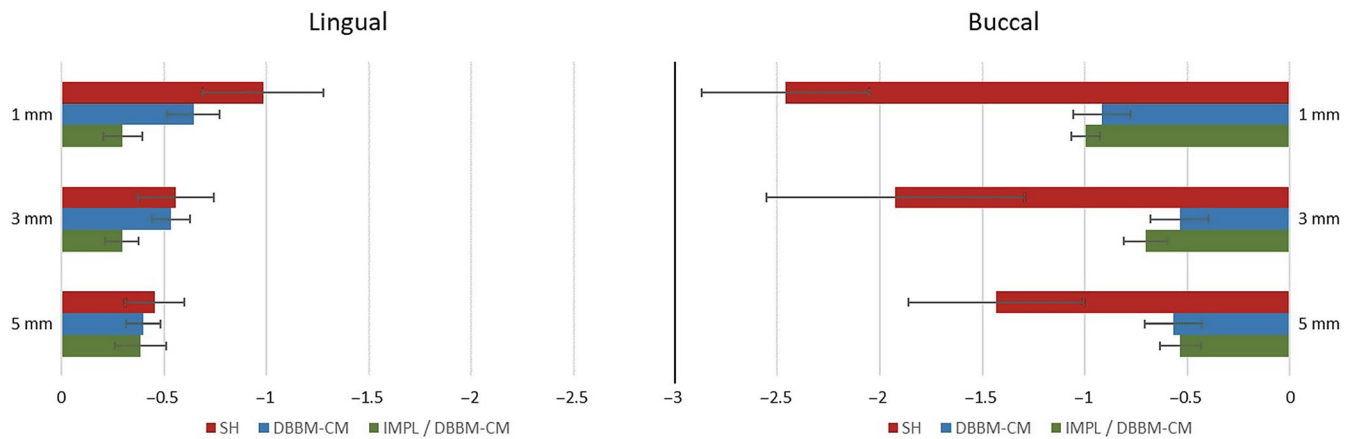


FIGURE 4 Changes in ridge width (mm) at buccal and lingual aspects over 4 months based on cone-beam computed tomography measurements

(5 mm) portion of the buccal bone wall in maxillary incisors and canines is < 0.5 mm wide, with an average of 0.6 mm wide.

4.2 | ARP

The observations in the present study established that the placement of a bone substitute material (DBBM) in the fresh extraction socket, covered by a collagen matrix, reduced vertical and horizontal ridge resorption. This is in agreement with data reported by Jung et al. (2013), in which both vertical and horizontal resorption were limited by the placement of DBBM, covered by a collagen matrix, in the fresh extraction socket, despite the fact that in that study a flapless approach was performed.

This is also in agreement with a number of recently published systematic reviews on ARP procedures (Ten Heggeler et al., 2011; Horvath et al., 2013; MacBeth et al., 2017; Mardas et al., 2010; Vignoletti, Discepoli, et al., 2012; Vignoletti, Matesanz, et al., 2012; Vittorini Orgeas et al., 2013) which conclude how no bone substitute material and/or membrane is able to completely preserve the alveolar ridge after tooth extraction, but may limit buccal plate resorption to a certain extent.

Findings from the present study revealed that mid-buccal horizontal changes 1 mm (0.91 ± 0.43 mm), and 3 mm (0.53 ± 0.44 mm) below the marginal crest have been the ones which statistically benefited the most from ARP procedure when compared to spontaneous healing. This means, in agreement with Araújo, Linder, Wennström, and Lindhe (2008), that graft material apparently promoted de novo hard tissue formation showing a radiographic appearance different from that of a cortical plate but maintaining the dimensions of the hard tissue wall. This is particularly true for sites made up exclusively of bundle bone, therefore regions with a very thin bone crest.

4.3 | ARP + Immediate implant placement

In the present work, no statistically significant difference resulted from the comparison between test group (IMPL/DBBM/CM) and control group (DBBM/CM), indicating that the preservation of bone

volumes is quite similar in sites where the implant was inserted and in the sites where only ARP was performed.

When an implant was inserted simultaneously to an ARP procedure after flapped tooth extraction, horizontal mean changes at 1 mm below the marginal crest were 1.29 ± 0.38 mm ($14.9 \pm 4.9\%$) with changes at buccal aspect of 0.99 ± 0.21 mm ($26.80 \pm 7.07\%$). These data are completely in agreement with a recent work by Sanz et al. (2017), aimed at evaluating differences in dimensional alterations of the ridge after 4 months between immediate implants and immediate implants associated with regenerative procedures. Reporting a bucco-lingual dimensional change (1 mm below the crest) in grafted sites of 1.3 (11%) and a reduction of the buccal cortical bone of 1.1 mm (29%), they demonstrated that placement of DBBM in the void between the implant and the walls of the fresh extraction socket somewhat counteracted the contraction of the buccal hard tissue plate that normally occurs during healing.

Similar data were also presented in a radiographic study by Degidi, Daprile, Nardi, and Piattelli (2012), in which the mean reduction in the distance between implant surface and outer surface

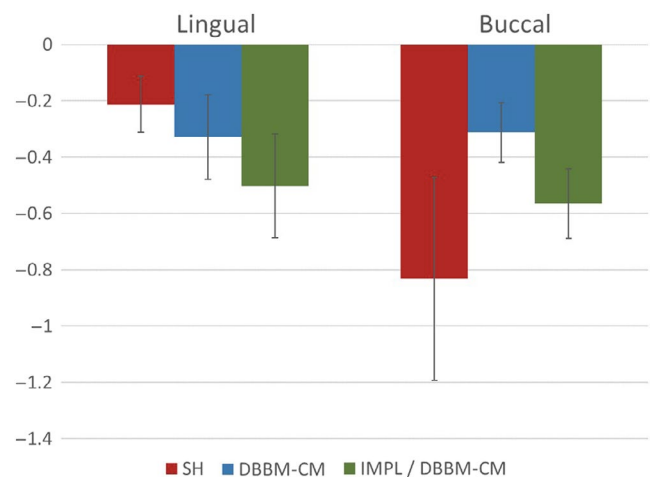


FIGURE 5 Changes in ridge height (mm) over 4 months based on cone-beam computed tomography measurements

of buccal bone crest was 0.88 ± 0.51 mm (29.3%) after 1 year of a flapless immediate implant placement with simultaneous grafting of the buccal gap with DBBM and immediate restoration. Analysing the height of the marginal buccal crest, the authors reported a mean reduction of 0.76 ± 0.96 mm, that is, similar to 0.6 ± 0.4 mm of vertical dimensional alteration obtained in this study at the buccal site when an immediate implant and an ARP procedure were simultaneously performed.

These data seem to confirm the trend towards better outcomes achieved by means of the combined use of regenerative techniques observed in a clinical trial by Chen, Darby, and Reynolds (2007) and by a recent systematic review (Clementini et al., 2015) on dimensional changes after immediate implant placement with or without simultaneous regenerative procedures. In IMPL/DBBM/CM group of the present study, a flapped procedure was performed and the inserted implant was not immediately restored. The use of a flapless procedure or an immediate restoration, as the placement of a soft-tissue graft or the use of a platform-switching implant-abutment connection should further be investigated in well-designed clinical trials, since there are indications of their potential benefit in maintaining ridge volume after tooth extraction.

Due to the small sample size, this randomized controlled clinical trial was not able to identify correlations between some prognostic factors (i.e., thickness of the buccal bone plate at baseline, tooth location) and the radiographic outcomes (Ferrus et al., 2010; Tomasi et al., 2010). The short follow-up period (4 months) of a radiographic analysis is another limit of this study since it does not allow an evaluation of the real benefits for patients of limiting morphological changes after tooth extraction. In this study, a number of outcomes could not be evaluated, as the necessity and the amount of a ridge augmentation procedure necessary for implant placement, the occurrence of soft tissue dehiscence and patient reported outcomes (overall treatment time, number of surgical procedures, aesthetic satisfaction). However, regardless of its limitations, the present study reveals interesting data which translates into clinically relevant information.

5 | CONCLUSION

The present study demonstrates that after a flapped extraction of a tooth, vertical and horizontal changes of the alveolar ridge occur, regardless of whether alveolar ridge preservation is performed. This happens despite the placement of an implant simultaneously with the ridge preservation procedure. However, a preservation technique, with or without immediate implant placement, reduces the horizontal bone morphological changes that occur, mostly in the coronal portion of the buccal bone plate, when compared to spontaneous healing. For this reason, immediate implant placement in postextraction sites plus an ARP technique may be a viable option to reduce hard tissue morphological changes and treatment time.

ACKNOWLEDGEMENTS

The authors would like to thank Dr. Lucrezia Paterno' Holtzman for review of the English language.

CONFLICT OF INTEREST

The authors report no conflict of interests related to the study.

ORCID

Marco Clementini  <https://orcid.org/0000-0002-1827-5200>

REFERENCES

- Araújo, M. G., da Silva, J. C. C., de Mendonça, A. F., & Lindhe, J. (2015). Ridge alterations following grafting of fresh extraction sockets in man. A randomized clinical trial. *Clinical Oral Implants Research*, 26, 407–412. <https://doi.org/10.1111/clr.12366>
- Araújo, M. G., Linder, E., Wennström, J. L., & Lindhe, J. (2008). The influence of Bio-Oss collagen on healing of an extraction socket: An experimental study in the dog. *International Journal of Periodontics and Restorative Dentistry*, 28, 123–135. <https://doi.org/10.1111/clr.12366>
- Araújo, M. G., & Lindhe, J. (2005). Dimensional ridge alterations following tooth extraction. An experimental study in the dog. *Journal of Clinical Periodontology*, 32, 212–218. <https://doi.org/10.1111/j.1600-051X.2005.00642.x>
- Araujo, M. G., Sukekava, F., Wennstrom, J. L., & Lindhe, J. (2005). Ridge alterations following implant placement in fresh extraction sockets: An experimental study in the dog. *Journal of Clinical Periodontology*, 32, 645–652. <https://doi.org/10.1111/j.1600-051X.2005.00726.x>
- Avila-Ortiz, G., Chambrone, L., & Vignoletti, F. (2019). Effect of alveolar ridge preservation interventions following tooth extraction: a systematic review and meta-analysis. *Journal of Clinical Periodontology*. [Epub ahead of print]. <https://doi.org/10.1111/jcpe.13057>
- Bliese, P. D. (2000). Within-group agreement, non-independence, and reliability: Implications for data aggregation and Analysis. In K. J. Klein, & S. W. Kozlowski (Eds.), *Multilevel theory, research, and methods in organizations* (pp. 349–381). San Francisco, CA: Jossey-Bass Inc.
- Chen, S. T., & Buser, D. (2014). Esthetic outcomes following immediate and early implant placement in the anterior maxilla – a systematic review. *International Journal of Oral & Maxillofacial Implants*, 29, 186–215. <https://doi.org/10.11607/jomi.2014suppl.g3.3>
- Chen, S. T., Darby, I. B., & Reynolds, E. C. (2007). A prospective clinical study of non-submerged immediate implants: Clinical outcomes and esthetic results. *Clinical Oral Implants Research*, 18, 552–562. <https://doi.org/10.1111/j.1600-0501.2007.01388.x>
- Clementini, M., Discepoli, N., Danesi, C., & de Sanctis, M. (2018). Biologically guided flap stability: The role of flap thickness including periosteum retention on the performance of the coronally advanced flap—A double-blind randomized clinical trial. *Journal of Clinical Periodontology*, 45, 1238–1246. <https://doi.org/10.1111/jcpe.12998>
- Clementini, M., Tiravia, L., De Risi, V., Vittorini Orgeas, G., Mannocci, A., & de Sanctis, M. (2015). Dimensional changes after immediate implant placement with or without simultaneous regenerative procedures: A systematic review and meta-analysis. *Journal of Clinical Periodontology*, 42, 666–677. <https://doi.org/10.1111/jcpe.12423>
- Cosyn, J., Hooghe, N., & De Bruyn, H. (2012). A systematic review on the frequency of advanced recession following single immediate implant treatment. *Journal of Clinical Periodontology*, 39, 582–589. <https://doi.org/10.1111/j.1600-051X.2012.01888.x>

- De Risi, V., Clementini, M., Vittorini, G., Mannocci, A., & de Sanctis, M. (2015). Alveolar ridge preservation techniques: A systematic review and meta-analysis of histological and histomorphometrical data. *Clinical Oral Implants Research*, 26, 50–68. <https://doi.org/10.1111/clr.12288>
- Degidi, M., Daprile, G., Nardi, D., & Piattelli, A. (2012). Buccal bone plate in immediately placed and restored implant with Bio-Oss collagen graft: A 1-year follow-up study. *Clinical Oral Implants Research*, 24(11), 1201–1205. <https://doi.org/10.1111/j.1600-0501.2012.02561.x>
- Discepoli, N., Vignoletti, F., Laino, L., de Sanctis, M., Munoz, F., & Sanz, M. (2013). Early healing of the alveolar process after tooth extraction. An experimental study in the beagle dog. *Journal of Clinical Periodontology*, 40, 638–644. <https://doi.org/10.1111/jcpe.12074>
- Discepoli, N., Vignoletti, F., Laino, L., de Sanctis, M., Munoz, F., & Sanz, M. (2015). Fresh extraction socket: Spontaneous healing vs. immediate implant placement. *Clinical Oral Implants Research*, 26, 1250–1255. <https://doi.org/10.1111/clr.12447>
- Evans, C. D., & Chen, S. T. (2008). Esthetic outcomes of immediate implant placements. *Clinical Oral Implants Research*, 19(1), 73–80.
- Ferrus, J., Cecchinato, D., Pjetursson, E. B., Lang, N. P., Sanz, M., & Lindhe, J. (2010). Factors influencing ridge alterations following immediate implant placement into extraction sockets. *Clinical Oral Implants Research*, 21, 22–29. <https://doi.org/10.1111/j.1600-0501.2009.01825.x>
- Fickl, S., Zühr, O., Wachtel, H., Stappert, C. F. J., Stein, J. M., & Hürzeler, M. B. (2008). Dimensional changes of the alveolar ridge contour after different socket preservation techniques. *Journal of Clinical Periodontology*, 35, 906–913. <https://doi.org/10.1111/j.1600-051X.2008.01305.x>
- Hämmerle, C. H. F., Araújo, M. G., & Simion, M. (2012). Evidence-based knowledge on the biology and treatment of extraction sockets. *Clinical Oral Implants Research*, 23(5), 80–82. <https://doi.org/10.1111/j.1600-0501.2011.02370.x>
- Horvath, A., Mardas, N., Mezzomo, L. A., Needleman, I. G., & Donos, N. (2013). Alveolar ridge preservation. A systematic review. *Clinical Oral Investigations*, 17, 341–363. <https://doi.org/10.1007/s00784-012-0758-5>
- Januario, A. L., Duarte, W. R., Barriviera, M., Mesti, J. C., Araujo, M. G., & Lindhe, J. (2011). Dimension of the facial bone wall in the anterior maxilla: A cone-beam computed tomography study. *Clinical Oral Implants Research*, 10, 1168–1171. <https://doi.org/10.1111/j.1600-0501.2010.02086.x>
- Jung, R. E., Philipp, A., Annen, B. M., Signorelli, L., Thoma, D. S., Hämmerle, C. H., ... Schmidlin, P. (2013). Radiographic evaluation of different techniques for ridge preservation after tooth extraction: A randomized controlled clinical trial. *Journal of Clinical Periodontology*, 1, 90–98. <https://doi.org/10.1111/jcpe.12027>
- Kerr, E. N., Mealey, B. L., Noujeim, M. E., Lasho, D. J., Nummikoski, P. V., & Mellonig, J. T. (2008). The effect of ultrasound on bone dimensional changes following extraction: A pilot study. *Journal of Periodontology*, 79(2), 283–290. <https://doi.org/10.1902/jop.2008.070289>
- Lang, N. P., & Bartold, P. M. (2018). Periodontal health. *Journal of Clinical Periodontology*, 45(20), S9–S16. <https://doi.org/10.1111/jcpe.12936>
- Lang, N. P., Pun, L., Lau, K. Y., Li, K. Y., & Wong, M. C. (2012). A systematic review on survival and success rates of implants placed immediately into fresh extraction sockets after at least 1 year. *Clinical Oral Implants Research*, 23(5), 39–66. <https://doi.org/10.1111/j.1600-0501.2011.02372.x>
- Lazzara, R. G. (1989). Immediate implant placement into extraction sites: Surgical and restorative advantages. *International Journal of Periodontics and Restorative Dentistry*, 9(5), 332–343.
- MacBeth, N., Trullenque-Eriksson, A., Donos, N., & Mardas, N. (2017). Hard and soft tissue changes following alveolar ridge preservation: A systematic review. *Clinical Oral Implant Research*, 28, 982–1004. <https://doi.org/10.1111/clr.12911>
- Mardas, N., Chadha, V., & Donos, N. (2010). Alveolar ridge preservation with guided bone regeneration and a synthetic bone substitute or a bovine-derived xenograft: A randomized, controlled clinical trial. *Clinical Oral Implants Research*, 21(7), 688–698. <https://doi.org/10.1111/j.1600-0501.2010.01918.x>
- Muhlemann, H. R., & Son, S. (1971). Gingival sulcus bleeding – a leading symptom in initial gingivitis. *Helvetica Odontologica Acta*, 15, 107–113.
- O'Leary, T. J., Drake, R. B., & Naylor, J. E. (1972). The plaque control record. *Journal of Periodontology*, 43, 38. <https://doi.org/10.1902/jop.1972.43.1.38>
- Pietrokovski, J., & Massler, M. (1967). Alveolar ridge resorption following tooth extraction. *Journal of Prosthetic Dentistry*, 17, 21–27. [https://doi.org/10.1016/0022-3913\(67\)90046-7](https://doi.org/10.1016/0022-3913(67)90046-7)
- Sanz, M., Lindhe, J., Alcaraz, J., Sanz-Sanchez, I., & Cecchinato, D. (2017). The effect of placing a bone replacement graft in the gap at immediately placed implants: A randomized clinical trial. *Clinical Oral Implants Research*, 28(8), 902–910. <https://doi.org/10.1111/clr.12896>
- Schropp, L., Wenzel, A., Kostopoulos, L., & Karring, T. (2003). Bone healing and soft tissue contour changes following single-tooth extraction: A clinical and radiographic 12-month prospective study. *The International Journal of Periodontics & Restorative Dentistry*, 23, 313–323.
- Schulte, W., & Heimke, G. (1976). The Tübingen immediate implant. *Die Quintessenz*, 27(6), 17–23.
- Tan, W. L., Wong, T. L., Wong, M. C., & Lang, N. P. (2012). A systematic review of post-extraction alveolar hard and soft tissue dimensional changes in humans. *Clinical Oral Implants Research*, 23(Suppl 5), 1–21. <https://doi.org/10.1111/j.1600-0501.2011.02375.x>
- Ten Heggeler, J. M. A. G., Slot, D. E., & Van der Weijden, G. A. (2011). Effect of socket preservation therapies following tooth extraction in non-molar regions in humans: A systematic review. *Clinical Oral Implants Research*, 22(8), 779–788. <https://doi.org/10.1111/j.1600-0501.2010.02064.x>
- Tomasi, C., Sanz, M., Cecchinato, D., Pjetursson, B., Ferrus, J., Lang, N. P., & Lindhe, J. (2010). Bone dimensional variations at implants placed in fresh extraction sockets: A multilevel multivariate analysis. *Clinical Oral Implants Research*, 21, 30–36. <https://doi.org/10.1111/j.1600-0501.2009.01848.x>
- Tonetti, M. S., Cortellini, P., Graziani, F., Cairo, F., Lang, N. P., Abundo, R., ... Wetzel, A. (2017). Immediate versus delayed implant placement after anterior single tooth extraction: The timing randomised controlled clinical trial. *Journal of Clinical Periodontology*, 44, 215–224. <https://doi.org/10.1111/jcpe.12666>
- Van der Weijden, F., Dell'Acqua, F., & Slot, D. E. (2009). Alveolar bone dimensional changes of post-extraction sockets in humans: A systematic review. *Journal of Clinical Periodontology*, 36, 1048–1058. <https://doi.org/10.1111/j.1600-051X.2009.01482.x>
- Vignoletti, F., Discepoli, N., Muller, A., de Sanctis, M., Munoz, F., & Sanz, M. (2012). Bone modelling at fresh extraction sockets: Immediate implant placement versus spontaneous healing: An experimental study in the beagle dog. *Journal of Clinical Periodontology*, 39, 91–97. <https://doi.org/10.1111/j.1600-051X.2011.01803.x>
- Vignoletti, F., Matesanz, P., Rodrigo, D., Figuero, E., Martin, C., & Sanz, M. (2012). Surgical protocols for ridge preservation after tooth extraction. A systematic review. *Clinical Oral Implants Research*, 23(Suppl 5), 22–38. <https://doi.org/10.1111/j.1600-0501.2011.02331.x>
- Vignoletti, F., & Sanz, M. (2014). Immediate implants at fresh extraction sockets: From myth to reality. *Periodontology*, 2000(66), 132–152. <https://doi.org/10.1111/prd.12044>
- Vittorini Orgeas, G., Clementini, M., De Risi, V., & de Sanctis, M. (2013). Surgical techniques for alveolar socket preservation: A systematic review. *International Journal of Oral and Maxillofacial Implants*, 28(4), 1049–1061. <https://doi.org/10.11607/jomi.2670>

How to cite this article: Clementini M, Agostinelli A, Castelluzzo W, Cugnata F, Vignoletti F, De Sanctis M. The effect of immediate implant placement on alveolar ridge preservation compared to spontaneous healing after tooth extraction: Radiographic results of a randomized controlled clinical trial. *J Clin Periodontol*. 2019;46:776–786. <https://doi.org/10.1111/jcpe.13125>